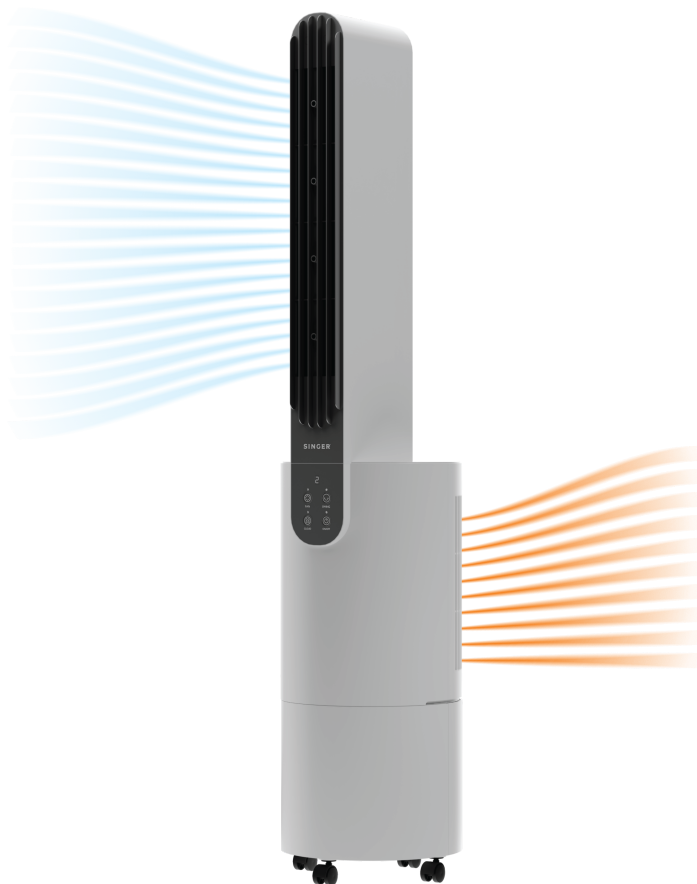


CLOUD^X

COOL FAN

COOLING REIMAGINED

HEALTHY. POWERFUL. SILENT



USER MANUAL

PLEASE READ THIS MANUAL CAREFULLY BEFORE OPERATING
AND RETAIN IT FOR FUTURE REFERENCE

CONGRATULATIONS!

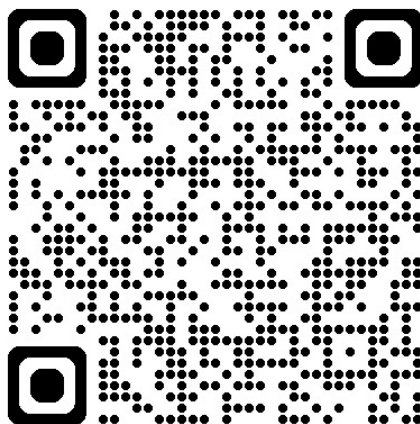
Dear Customer,

You are now a proud member of the SINGER family. A family that cares for your health and respects your living comfort ...

SINGER Cloud X cool fan has been designed and manufactured, keeping in view world class standards and the requirements of modern living comfort.

This instruction manual has been specially designed with you in mind so that you can get best out of your SINGER Cloud X cool fan. Before you start using the appliance, do go through this manual thoroughly. It contains important information on operations, and useful tips that will keep your SINGER Cloud X cool fan as good as new, year after year.

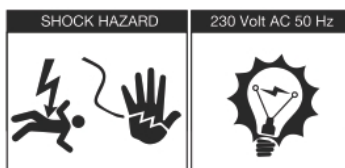
**Catch the videos on how to easily clean
the filter and water tank**



SAFETY

READ AND SAVE THESE INSTRUCTIONS: When using electrical appliances, basic safety precautions should always be followed:

- Your Cloud X runs on 230 Volt AC, 50 Hz. Check the household voltage to ensure it matches the appliance's rated specification.
- Before operating the product remove it from its packaging and check that it is in good condition.
- DO NOT operate the product with a damaged cord or plug. We recommend not using an extension cord with this appliance.
- DO NOT run power cord under carpeting, or cover it with rugs or runners. Keep the cord away from areas where it may be tripped over.
- Always unplug the product before moving it from one location to another.
- Always unplug the product before refilling the water tank.
- Always unplug the appliance from the power source before cleaning, servicing or relocating the unit.
- Remove the power cord from the electrical receptacle by grasping and pulling on the power cord plug-end only, never pull the cord.
- DO NOT use the product in areas where gasoline, paint or other flammable goods and objects are stored.
- When using the "Cloud " setting, check the water tank to ensure that it is full or above minimum recommended level.
- DO NOT attempt to repair or adjust any electrical or mechanical functions of the Cloud X, as this may void the warranty.



SAFETY

- DO NOT cover the air suction area or cool air outlet area on the Cloud X as this may cause motor damage or product malfunctioning
- DO NOT leave the operating Cloud X unattended for an extended period of time.
- DO NOT let children play with this appliance, packaging or plastic bags and installation kit.
- If the unit is damaged or it malfunctions, do not continue to operate it. Refer to the troubleshooting section and seek professional advice.
- Place the unit on a level floor.
- Store in a dry area when not in use.

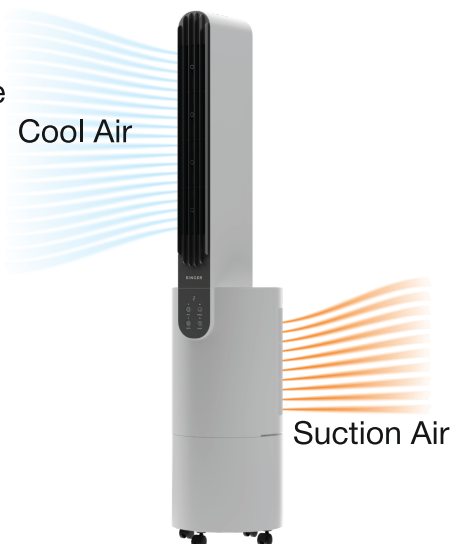
USER TIPS

Energy efficient, No compressor

Cloud X cool fan is built to maximize energy efficiency and keep running costs low.

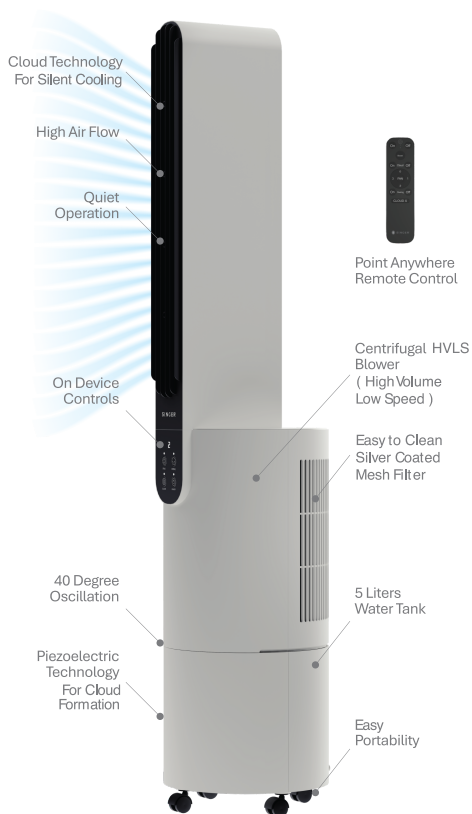
This no-compressor system cools naturally, efficiently and inexpensively.

The recommended relative humidity is lesser than 60% to allow noticeable temperature decrease in the air.

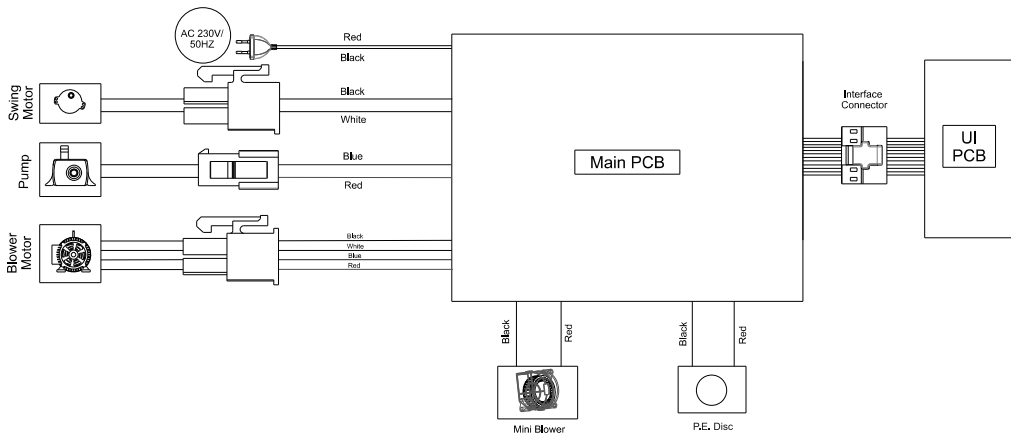


Note: Please Do not Restrict The suction Area of Main Unit

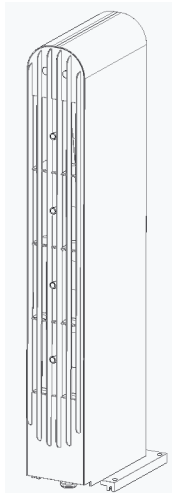
PARTS DESCRIPTION



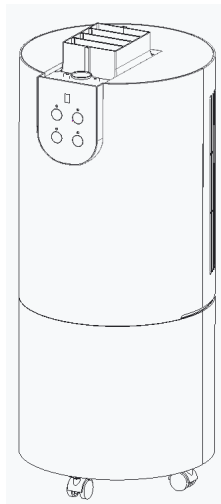
ELECTRICAL WIRING DIAGRAM



What is in the box



Unit A



Unit B



Remote and 2 spare
battery



6 self tapping
Screws



A handy
Screwdriver

Technical Specification

Power Consumption	160W
Voltage	220 –240V
Frequency	50Hz
Cord Length	2 meter
Speed Levels	3
Cloud	Yes
Oscillation	Yes
Mode	Quiet
Control	Touch & RF Remote

Cloud X is Easy to Install

Please follow the steps (1 to 6) for a perfect assembly and a lasting product experience.

Step 1

- a) Unpack Unit A (Top body) and Unit B (Main body) from the box. Place Unit A on a soft surface to protect it and Unit B on the floor, as shown in the picture.
- b) Remove the plastic bag from both Unit A and Unit B.

Step 2

To assemble Unit A and Unit B, use both hands gently and press down on the five indicated points as shown in the picture on the top cover of Unit B.



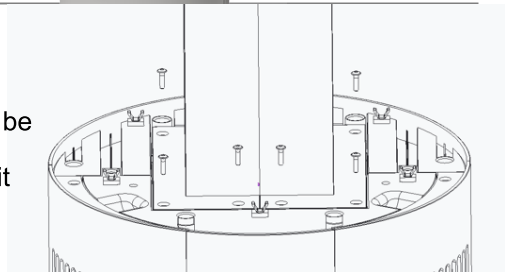
Step 3

Locate the matching holes on Unit B, one is a circular hole, and another one is a rectangular protrusion. Gently place Unit A on top of Unit B. It should fit snugly without force.

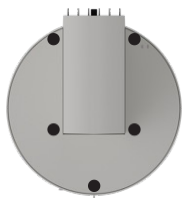


Step 4

Locate the six screws provided (they will be on top of the Styrofoam insert). Place these screws along with the holes of Unit A, connecting it to Unit B. Do not overtighten the screws.

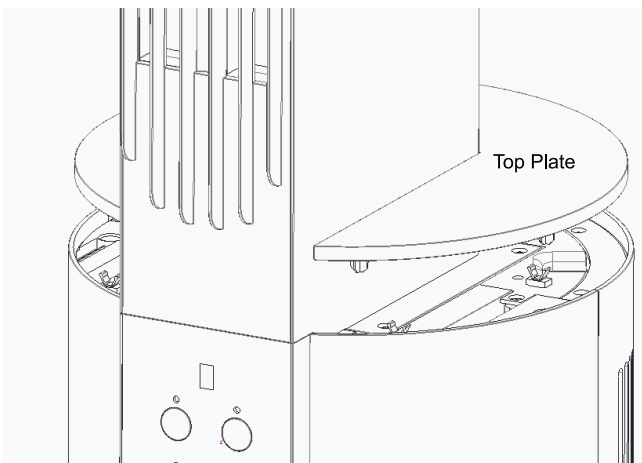


Cloud X is Easy to Install



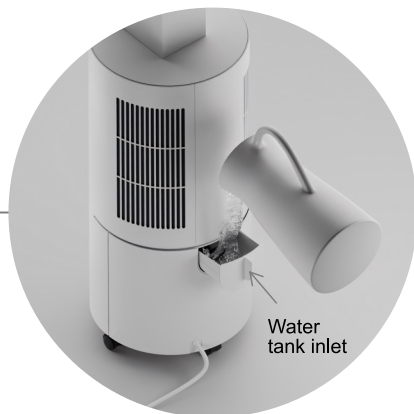
Step 5

To attach the top cover, gently press down using both hands on five points. Cloud X Unit is now assembled.



Step 6

On the lower back of Cloud X, locate the retractable spout. Gently pull it out. Fill the tank through the spout with water. (For hard water, RO water is recommended.)



Step 7

- a) Close the water tank inlet. Cloud x is ready to use.
- b) Plug Cloud X into a power outlet. Insert the batteries into the remote control. Turn on the fan and the Cloud feature.

Note

- a) The cloud function will begin operating 30 seconds after the cloud feature is activated.



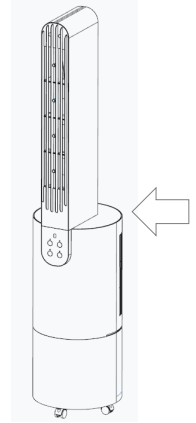
- b) If water level goes below minimum level, the cloud function will cut off, refill the tank & Restart cloud function on remote.
- c) Cloud function does not operate when fan is at '0' speed.

Easy to Clean Mesh Filter

How to clean silver coated Anti Viral and Anti Bacterial mesh Filter?

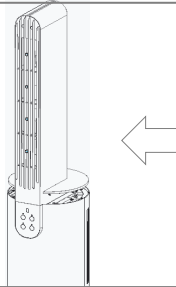
Step 1

To detach the top cover from the Cloud x Cool fan, gently press down on the five indicated points as shown in the picture on the top cover of the Cloud X.



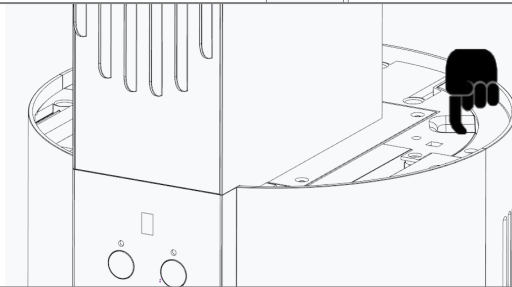
Step 2

Remove the top cover of the fan to access the openings of the side grills.



Step 3

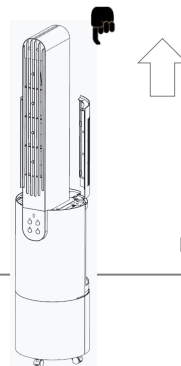
Gently pull the inlet grill out of the fan using your finger, as shown in the picture 1.



Picture 1

Step 4

The two grills (Left & Right) will be released from the fan, as shown in Picture 2.

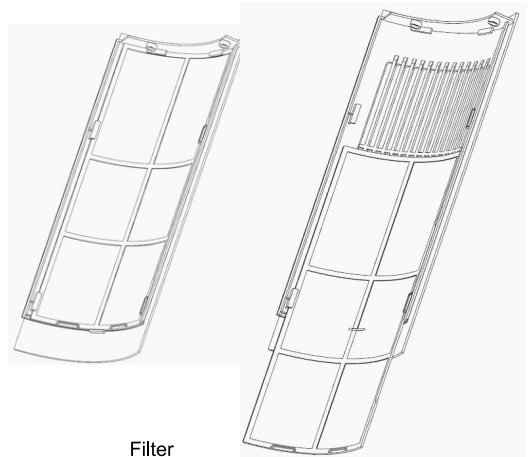


Picture 2

Easy to Clean Mesh Filter

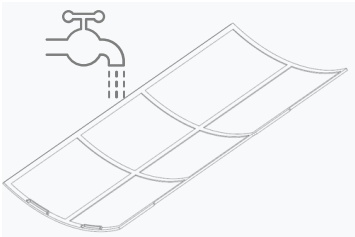
Step 5

Gently pull the filter sliding out of the grill using your finger, as shown in the picture.



Filter

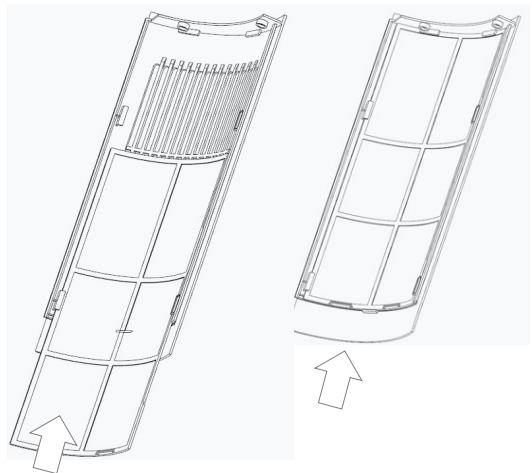
Step 6



- a) Rinse the filter under tap water to clean it.
- b) After washing the filter, allow it to dry completely before placing it in the Cloud X.

Step 7

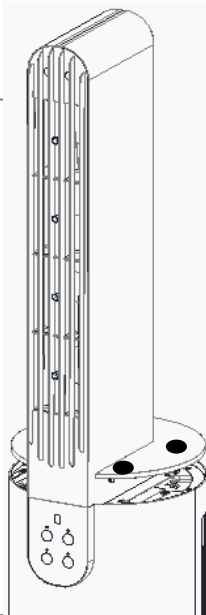
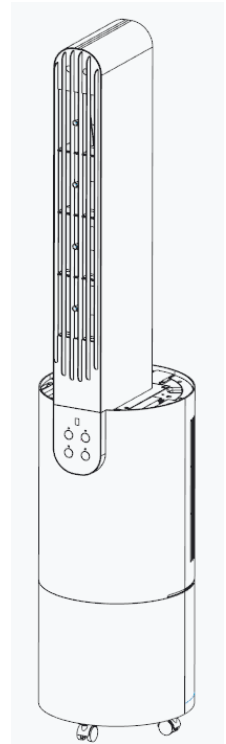
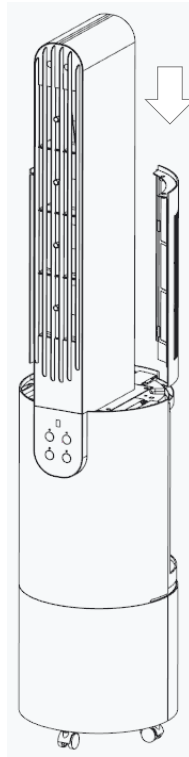
- a) Insert the filter into the inlet grill as illustrated in the picture.
- b) Slide the filter into the inlet grill and secure all 6 locks properly.



Easy to Clean Mesh Filter

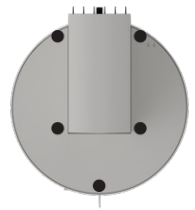
Step 8

Insert the inlet grill into the cloud x and slide it down to secure it properly.



Step 9

- Position the top plate and secure it by applying pressure at five points.
- The fan is now ready for use after the filters have been cleaned.
- In case of drop in airflow clean the mesh filter, Depending on the quality of the air you may have to clean filter more frequently.



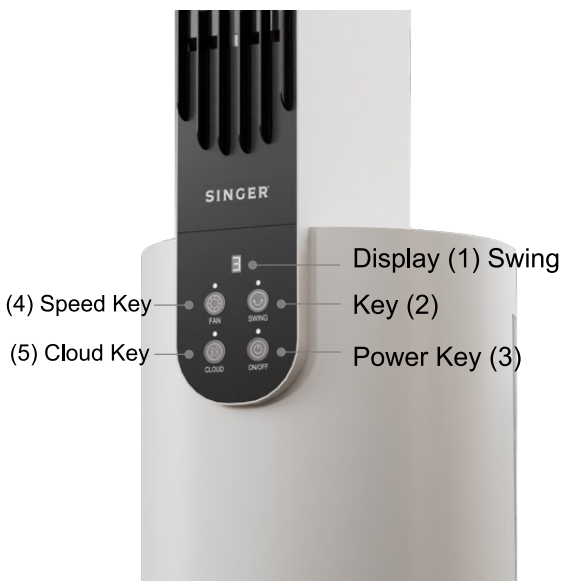
CLOUD FAN INTERFACE DETAILS

CLOUD FAN REMOTE INTERFACE DETAILS



CLOUD FAN USER INTERFACE PANEL DETAILS

(1) CLOUD FAN DISPLAY DETAILS



QUIET MODE



SPEED LEVEL 1



SPEED LEVEL 2



SPEED LEVEL 3

(2) ON/OFF Button

- If Power On command is given, Display will show previous set speed and FAN will start running as per the speed level shown on SSD (Seven Segment Display).
- If the FAN is powered ON, ON/OFF LED indication will be turned ON.
- Using Remote ON/OFF command can be given individually.
- Using UI panel ON/OFF command will toggle with each press of key between power ON & Power OFF.

(3) Cloud

- Cloud indicator LED will be turned ON if Cloud is in ON condition.
- Cloud ON/OFF condition will be stored in memory upon power reset.
- If Cloud ON command is active, first pump will be turned ON and after 30 seconds Cloud will turn ON.
- Upon Cloud ON command, Tank LED will turn ON for 30 seconds.
- Using Remote Cloud On/Off command can be given individually.
- Using UI panel Cloud command will toggle with each press of Cloud key between Cloud On & Cloud Off.
- Cloud function will not operate at fan speed '0'.

(4) FAN

- If On/Off command is active, FAN will run at previous set speed.
- Upon Power reset, FAN previous setting will be stored in memory.
- Using Remote FAN speed can be set directly by pressing speed key 0,1, 2, 3 & QUIET mode.
- Using UI, FAN speed will toggle between 0,1, 2, & 3 with each press of key.

(5) SWING

- Swing will start upon swing ON command.
- Using Remote, Swing can be turned On and Off by pressing ON & OFF key.
- Using UI panel Swing command will toggle with each press of key between Swing ON & Swing OFF.

TROUBLE SHOOTING GUIDE

FAN not working	<ol style="list-style-type: none">1. Check if power is On and display is set to 1, 2, 3 or quiet mode.2. Remove the right inlet grill and check if motor connector is connected properly.3. Call for service if not resolved.
Swing not working	<ol style="list-style-type: none">1. Check if swing is turned On and swing indication in On.2. Remove the right inlet grill and check if swing connector is connected properly.3. Call for service if not resolved.
Cloud not working	<ol style="list-style-type: none">1. Check if Cloud is turned On and Cloud indication in On.2. Refill the water and turn On the Cloud again.3. Check if fan is on 0 speed. Turn fan speed to quiet ,1,2,3 Position.4. Remove the right inlet grill and check if all the connectors are connected properly.5. Check if Pump is working.6. Call for service if not resolved.
Less Air flow at high speed	<ol style="list-style-type: none">1. Ensure If the supply voltage is 230Vac.2. Remove both the inlet grill.3. Remove filter mesh from inlet grill and clean it properly.
Abnormal Noise	<ol style="list-style-type: none">1. Ensure all the parts assembled properly as per installation guidelines.

SERVICE AND WARRANTY

This appliance is warranted for 2 years against all manufacturing defects from the date of sale. In the event of any complaint, please contact authorised service center.

The warranty is valid only when:

1. The appliance has been installed, used and maintained in accordance with the instruction manual.
2. The warranty card and cash memo duly signed by the authorised dealer are presented with the complaint.
3. The appliance has not been opened or tampered with, by any unauthorized person.

This warranty does not apply for:

1. Damages Due to chipping, peeling, plating and denting.
2. Breakage or damage to components made out of Bakelite, Urea, ABS, SAN and such plastic materials, rubber parts and cord. Normal wear and tear of parts.
3. Damage resulting from accidents, mishandling or negligence on part of the customer.

Liability for consequential loss or damages:

1. The Company will not be liable for any loss or damage arising/resulting From indirect or consequential loss or damage
2. The Company aggregate liability in respect of all claims under the Warranty shall not exceed the original purchase price of the Product or, at Company's option, replacement of the Product with a like or similar product
3. The Company excludes all other warranties, conditions, terms, representations and undertakings whether express or implied.

Jurisdiction:

1. The courts at Delhi shall have exclusive jurisdiction to resolve any disputes between the parties arising under Terms and Conditions of Warranty.

WARRANTY CARD

QR Code



CLOUD X COOL FAN

CUSTOMERS NAME AND ADDRESS

.....

.....

.....

.....

INVOICE NO. DATE OF PURCHASE

.....

.....

DEALER'S STAMP / SIGNATURE :

MONTH OF MFG. :



SINGER INDIA LIMITED



A-26/4, 2ND FLOOR, MOHAN COOPERATIVE INDUSTRIAL ESTATE,

NEW DELHI-110044 | TOLL FREE : 1800 103 3474

E-MAIL : CUSTOMERSUPPORT@SINGERINDIA.COM | WEBSITE : WWW.SINGERINDIA.COM